



**TRIPOLIS- BOONDANG, SEOUL, KOREA**

**CLIENT:** Kolon Construction Corporation  
**COMPLETION:** 2001 (Currently under construction)

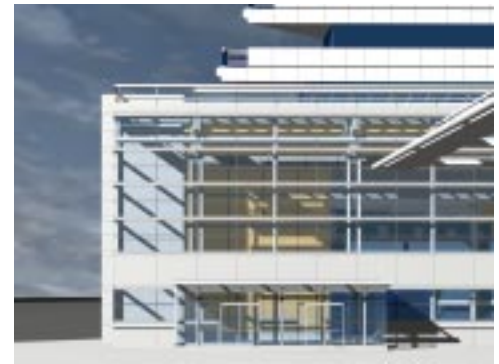
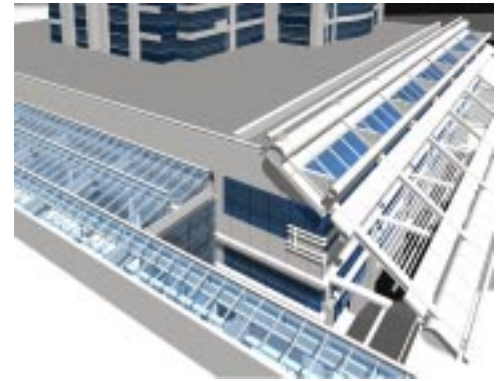
**DESCRIPTION:** The Tripolis project consists of three 37 story towers situated on a 5 story mixed use retail base. A small portion of the housing units are located in lowrise units which face the adjacent lush park to the south. Careful attention was paid to organize the multiple tower scheme in a way which maximizes southern exposure and eliminates northern exposure. The design of this project resulted in unprecedented record levels of unit preselling.

**COST:** \$300 million.

**ROLE:** AJLA was the Design Architect of this project. AJLA participates through all design and construction phases of the project. The Local Architect for the project was Hanul International.

**STATUS:** Currently under construction.

A N T H O N Y J L U M S D E N & A S S O C I A T E S



**TRIPOLIS- BOONDANG, SEOUL, KOREA**

**CLIENT:** Kolon Construction Corporation  
**COMPLETION:** 2001 (Currently under construction)

**DESCRIPTION:** The Tripolis project consists of three 37 story towers situated on a 5 story mixed use retail base. A small portion of the housing units are located in lowrise units which face the adjacent lush park to the south. Careful attention was paid to organize the multiple tower scheme in a way which maximizes southern exposure and eliminates northern exposure. The design of this project resulted in unprecedented record levels of unit preselling.

**COST:** \$300 million.

**ROLE:** AJLA was the Design Architect of this project. AJLA participates through all design and construction phases of the project. The Local Architect for the project was Hanul International.

**STATUS:** Currently under construction.

A N T H O N Y J L U M S D E N & A S S O C I A T E S