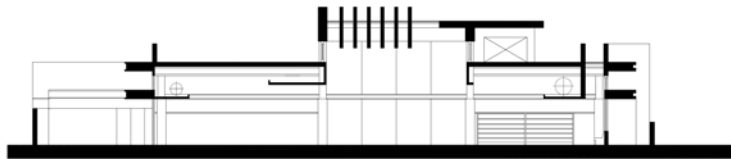


Floorplan



Cross Section showing sun control



Model – Roof Skylight Shading



Model – Roof Skylight Shading



Model – Interior Reading Rooms



Model – Interior Reading Rooms

## PICO UNION BRANCH LIBRARY

LOS ANGELES, CALIFORNIA

A. J. LUMSDEN for AJLA – Design Architects

CLIENT: City of Los Angeles, Fontayne Holmes, Director – Library Facilities Division 213 228.7586

DESCRIPTION: The exterior planes are related to the system of introducing reflected natural light into the interior of the building. The interior is also related to the craftsman style emphasizing wood. The ceiling heights vary considerably with stepped planes accommodating up-lights. All of the spaces in the building look to gardens on the north, east & south sides. At the end of the central volume of the building, a naturally lighted garden is situated on the axis of the main reading area and can be viewed from the entry lobby. Changes in the ceiling planes coupled with the reflected light from the vertical & horizontal surfaces will result in a series of interior spaces enhanced by a great variety of light qualities. This ambience of wood and plaster surfaces frames the views to the gardens. There is a large window to a garden at the East end of the library & a long horizontal window with a view to a landscape space on the south side. This window is shielded from the sun by horizontal shading extended from the building. The exterior landscaped spaces in addition to being pleasant to view are designed to allow secure access for everyone who uses the libraries.