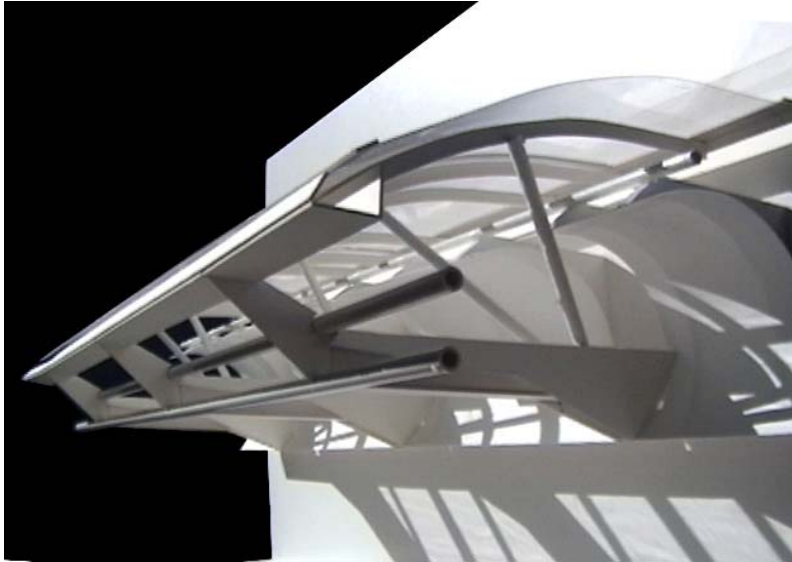
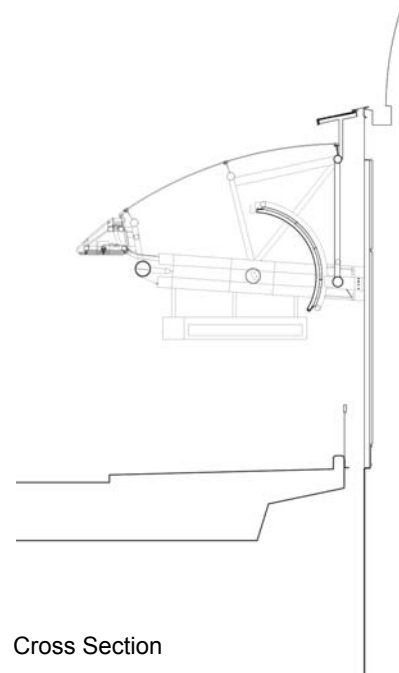


Elevation – Special Condition



Design Model – Partial Canopy Section



Cross Section

LAX Departure Level Pedestrian Improvements

LOS ANGELES, CALIFORNIA

CONTACT: Kim Day
Deputy Executive Director
Los Angeles World Airports
1 World Way
Los Angeles, CA 90045
(310) 646-7393 tel
(310) 646-1889 fax

COST: \$3 million (Phase One)

ROLE: AJLA is the design architect responsible for the conceptual design, schematic design and design development

STATUS: *Project is under construction.*



Nighttime Illumination Study

DESCRIPTION: The basic focus of the design is to improve passenger protection from the elements, to enhance the appearance of the terminals and airport, and to improve the ambiance of the pedestrian circulation areas. It is modular and repetitive, incorporating the existing terminal canopy structure into the design. Glazed curved surfaces are raised to increase the volume above the sidewalk to a transparent volume introducing light. Curved metal reflectors are positioned to act as a source of light for the sidewalk, and to act as an illuminated surface that will be visible from the roadways and other vantage points external to the canopy. The basic canopy sections are modular and lightweight in order to make them economical to build. Structurally, the canopy design is symbolic of aircraft design. The project will include 6,500 linear feet of the new façade enhancement canopy system and lighting design for the entire departure level deck at LAX.